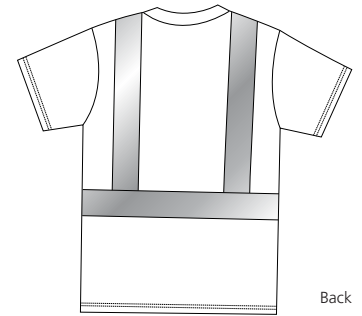
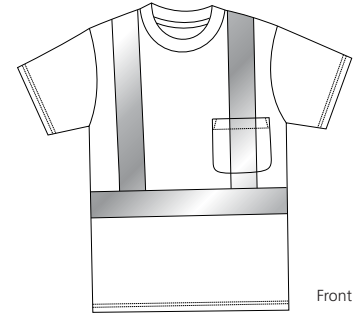


# ANSI Compliant Safety T-Shirt

**CornerStone**<sup>™</sup>  
by Port Authority®



## CS401

- \* ANSI Class 2 and OSHA-compliant \* 5.6-ounce
- \* 100% polyester interlock with wicking function \* High visibility fluorescent fabric
- \* Ultra-bright coloration for high visibility
- \* 2 vertical and 1 horizontal 2" wide reflective taping on front and back
- \* Pocket for pens and tools

### Care Instructions:

Machine wash, tumble dry.

### Finished Measurements in Inches

Size	XS	S	M	L	XL	2XL	3XL	4XL
Chest	17	19	21	23	25	27	29	31
Shoulder	16.25	17.25	19.25	21.25	23.28	25.25	27.25	29.25
Length	26	27	29	30	31	33	34	35
Sleeve	7.75	8.25	8.75	9.25	9.75	10.25	10.75	11.25
Neck	6.12	6.62	6.62	7.12	7.12	7.37	7.37	7.62

Chest measured 1" below arm hole. Shoulder measured from arm hole to arm hole. Body length measured from high point shoulder seam to hem. Sleeve measured from shoulder seam to hem. Neck opening from seam to seam.

### Colors



#### Please Note:

Colors shown are approximate and for reference only. For closest match see PMS colors, or for exact match, returnable samples and grommets are available.

### Color Chart

Base Color	Safety Orange	Safety Yellow
Textile PMS	fluorescent dye, no match	fluorescent dye, no match
General PMS	fluorescent dye, no match	fluorescent dye, no match